

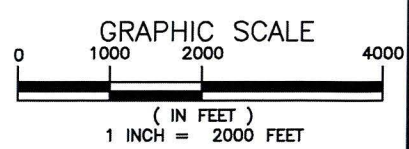
**THE POINT CONDOMINIUM T-DOCK
& BULKHEAD IMPROVEMENTS
CITY OF ANNAPOLIS**

APPL. BY: THE POINT CONDOMINIUM COUNCIL OF UNIT OWNERS

VICINITY MAP

DATE: OCTOBER 2024 SHEET 1 OF 12

© OPEN STREETMAP (AND) CONTRIBUTORS, CC-BY-SA



BayLand
Consultants & Designers, Inc.
"Integrating Engineering and Environment"
7455 New Ridge Road, Suite T Phone: (410) 694-9491
Hanover, Maryland 21076 Fax: (410) 694-9405
www.baylandinc.com

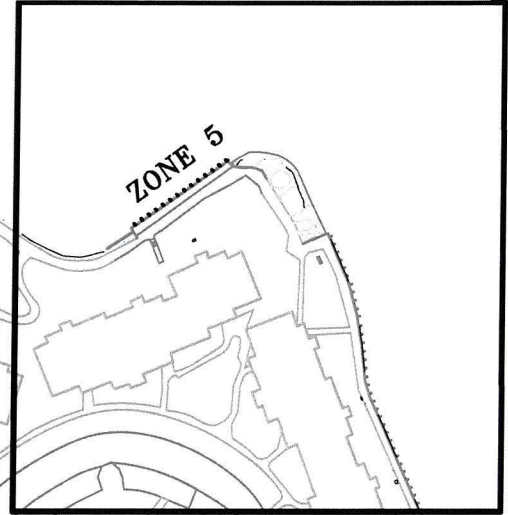
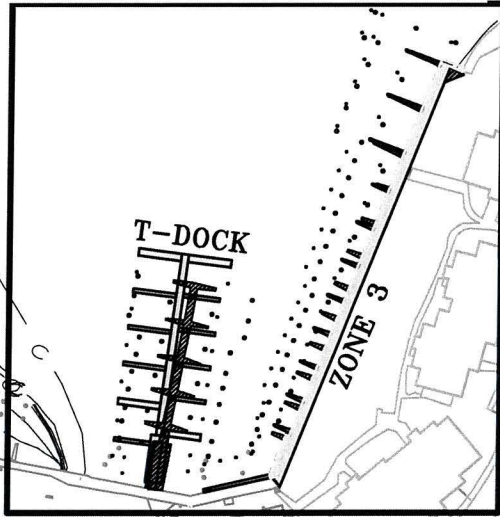
Z:\8_19704_THE POINT_T-DOCK_BULKHEAD_PERMITTING\CAD FILES\SHEET FILES\FPA\8_19704_IPR01.DWG



SHEET 4 & 6 OF 12

APPROX. LOCATION OF FIBER OPTIC AND ARMORED CABLES (BASED ON VERIZON FIELD ASSESSMENT) TO BE FIELD VERIFIED AND MARKED BY CONTRACTOR

SHEET 3 & 5 OF 12



PRESIDENT POINT DR

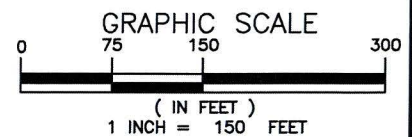
MOSS HAVEN CT

THE POINT CONDOMINIUM T-DOCK & BULKHEAD IMPROVEMENTS CITY OF ANNAPOLIS

APPL. BY: THE POINT CONDOMINIUM COUNCIL OF UNIT OWNERS

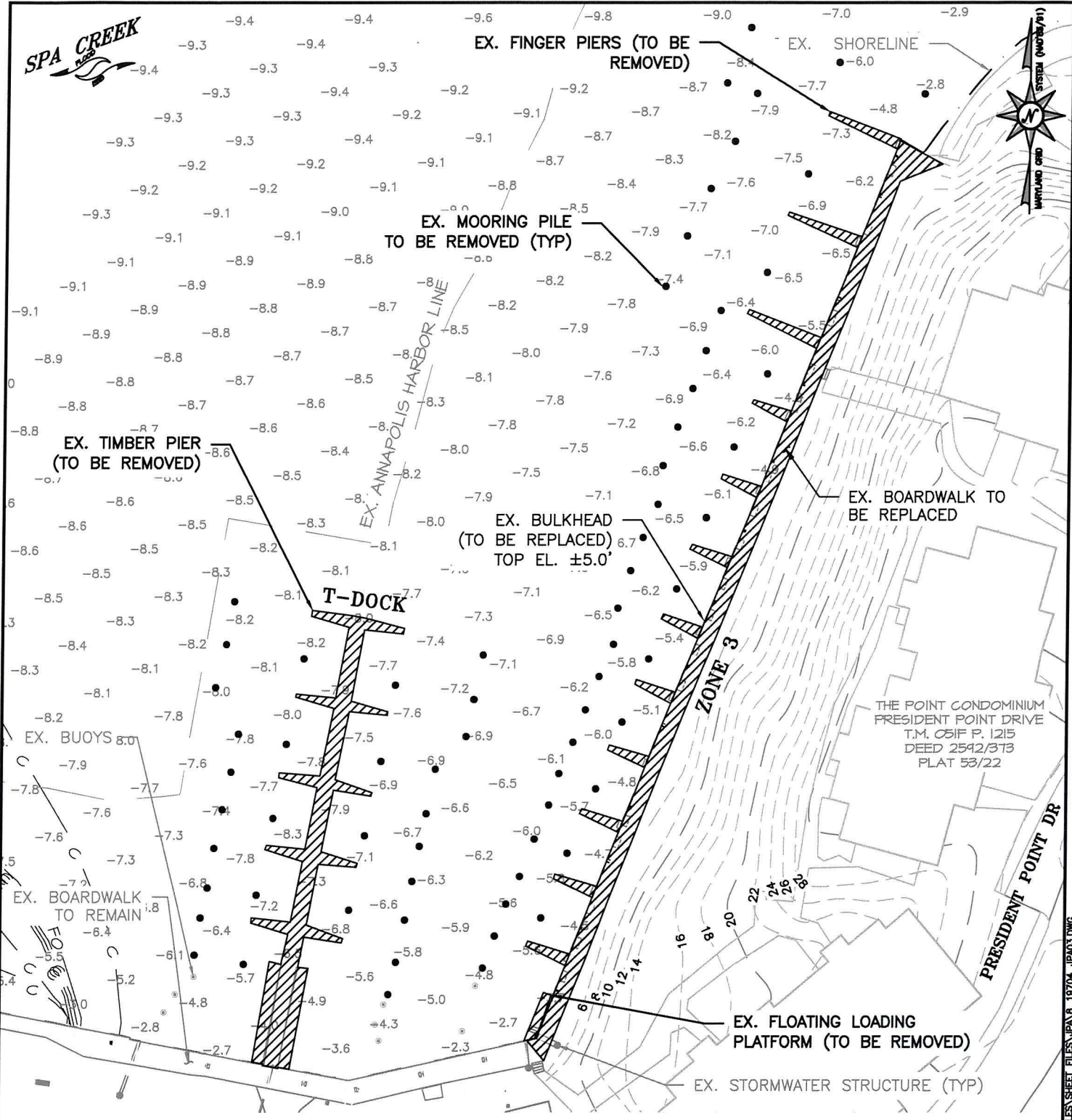
KEY SHEET

DATE: OCTOBER 2024 SHEET 2 OF 12



Bayland Consultants & Designers, Inc. Integrating Engineering and Environment 7455 New Ridge Road, Suite T Phone: (410) 694-9401 Hanover, Maryland 21076 Fax: (410) 694-9405 www.baylandinc.com

Z:\8_19704_THE_POINT_T-DOCK_BULKHEAD_PERMITTING\GD0_FILES\SHEET_FILES\JPA\B_19704_JPA02.DWG

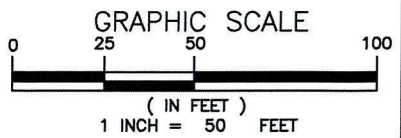


**THE POINT CONDOMINIUM T-DOCK
& BULKHEAD IMPROVEMENTS
CITY OF ANNAPOLIS**

APPL. BY: THE POINT CONDOMINIUM COUNCIL OF UNIT OWNERS

EXISTING CONDITIONS & DEMOLITION PLAN

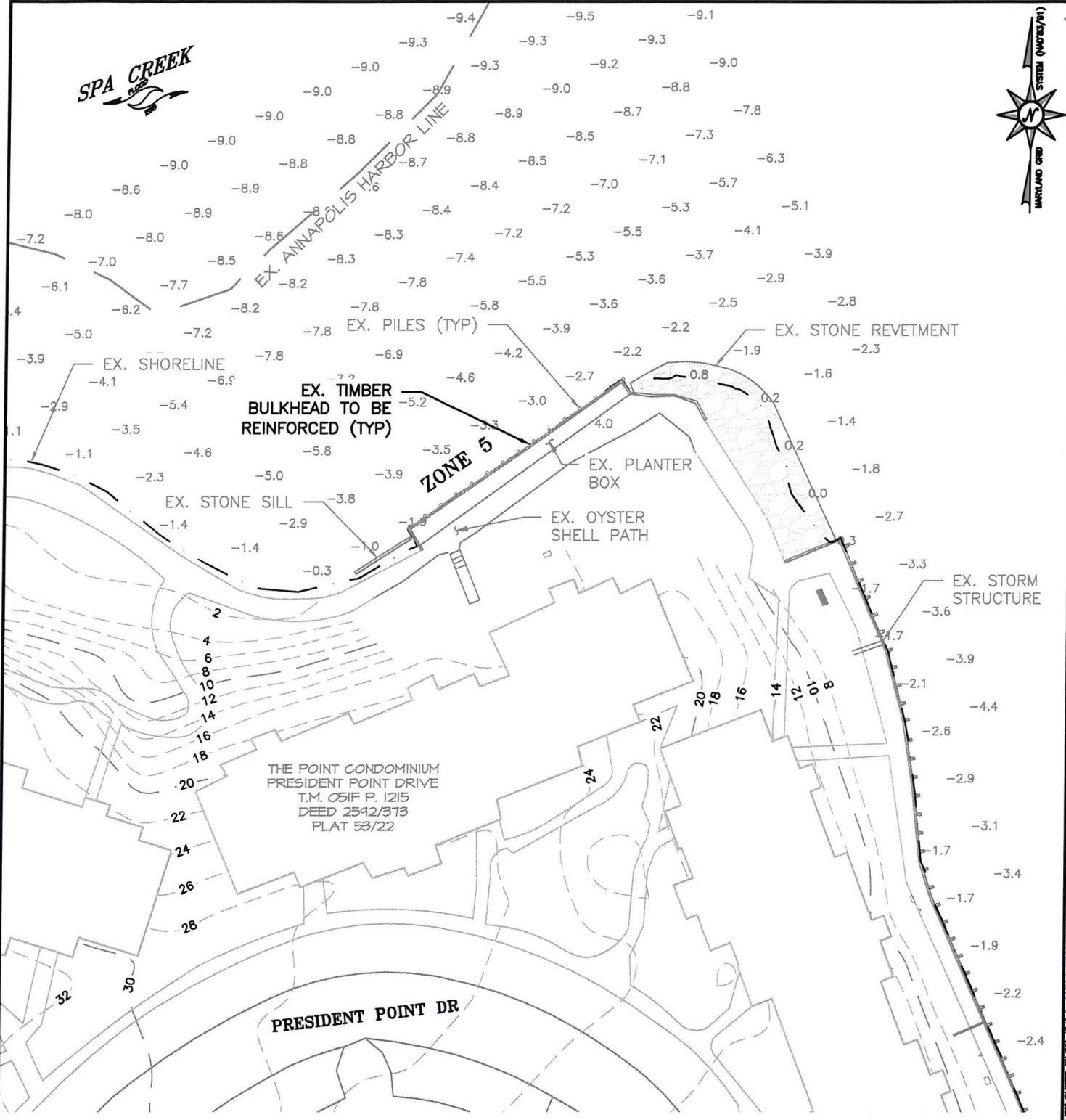
DATE: OCTOBER 2024 SHEET 3 OF 12



NOTE:
BASEMAP TAKEN FROM ANNE ARUNDEL COUNTY
2024 PLANIMETRICS AND 2020 IMAGERY.

BayLand
Consultants & Designers, Inc.
"Integrating Engineering and Environment"
7455 New Ridge Road, Suite T Phone: (410) 694-9401
Hanover, Maryland 21076 Fax: (410) 694-9405
www.baylandinc.com

Z:\0-19704-THE POINT-T-DOCK-BULKHEAD-IMPROVEMENTS\CAD FILES\SHEET FILES\JPA&L\19704-JPA03.DWG

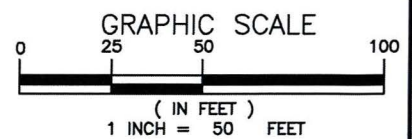


**THE POINT CONDOMINIUM T-DOCK
& BULKHEAD IMPROVEMENTS
CITY OF ANNAPOLIS**

APPL. BY: THE POINT CONDOMINIUM COUNCIL OF UNIT OWNERS

EXISTING CONDITIONS & DEMOLITION PLAN

DATE: OCTOBER 2024 SHEET 4 OF 12

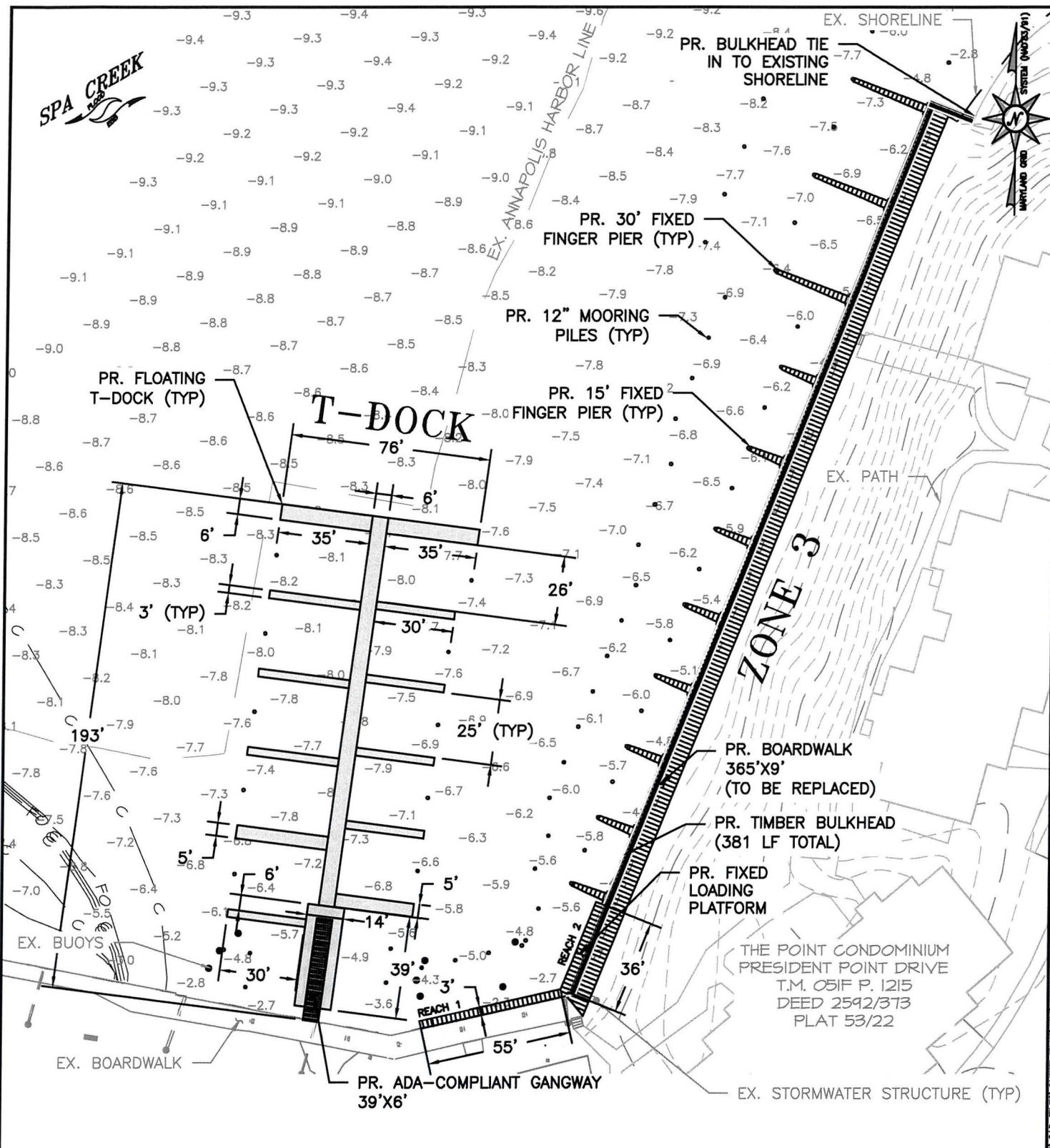


NOTE:
BASEMAP TAKEN FROM ANNE ARUNDEL COUNTY
2024 PLANIMETRICS AND 2020 IMAGERY.

Bays
Land
Consultants & Designers, Inc.
"Integrating Engineering and Environment"

7455 New Ridge Road, Suite T Phone: (410) 694-9401
Hanover, Maryland 21076 Fax: (410) 694-9405
www.baylandinc.com

Z:\B-19704-THE POINT-T-DOCK-BULKHEAD-IMPROVEMENTS\CAD FILES\SHEET FILES\SPAN\19704-1P004.DWG

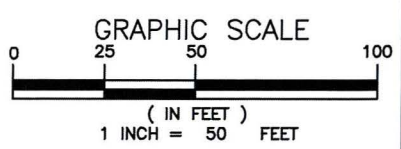


**THE POINT CONDOMINIUM T-DOCK
& BULKHEAD IMPROVEMENTS
CITY OF ANNAPOLIS**

APPL. BY: THE POINT CONDOMINIUM COUNCIL OF UNIT OWNERS

SITE PLAN

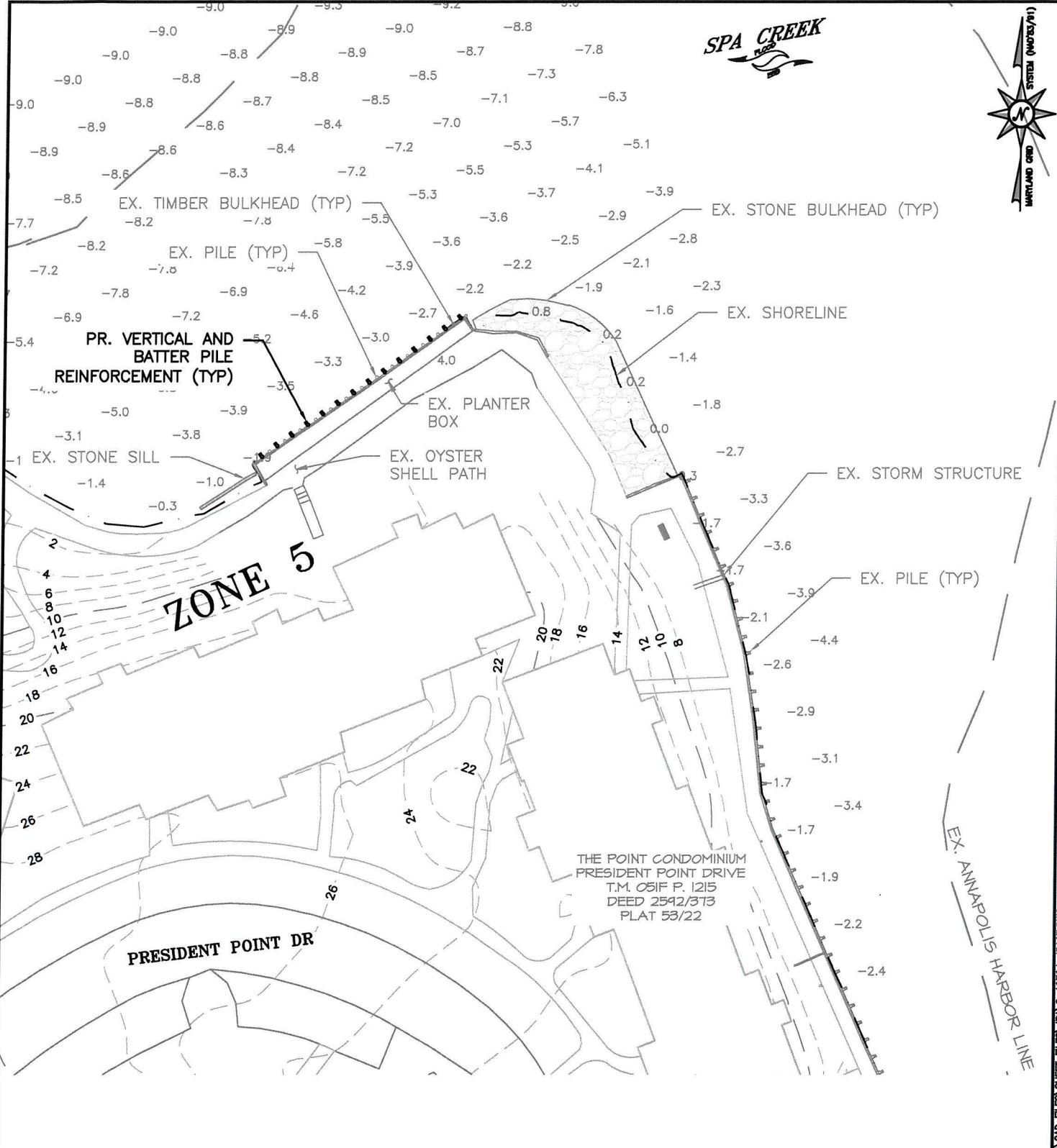
DATE: OCTOBER 2024 SHEET 5 OF 12



NOTE:
BASEMAP TAKEN FROM ANNE ARUNDEL COUNTY
2024 PLANIMETRICS AND 2020 IMAGERY.

BayLand
Consultants & Designers, Inc.
"Integrating Engineering and Environment"
7455 New Ridge Road, Suite T Phone: (410) 694-9401
Hanover, Maryland 21076 Fax: (410) 694-9405
www.baylandinc.com

Z:\08_19704_THE_POINT_T-DOCK_BULKHEAD_PERMITTING\CAD FILES\SHEET FILES\WPA\01_19704_JUPA06.DWG

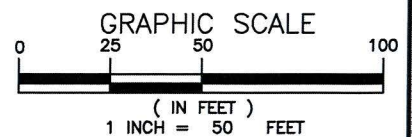


**THE POINT CONDOMINIUM T-DOCK
& BULKHEAD IMPROVEMENTS
CITY OF ANNAPOLIS**

APPL. BY: THE POINT CONDOMINIUM COUNCIL OF UNIT OWNERS

SITE PLAN

DATE: OCTOBER 2024 SHEET 6 OF 12

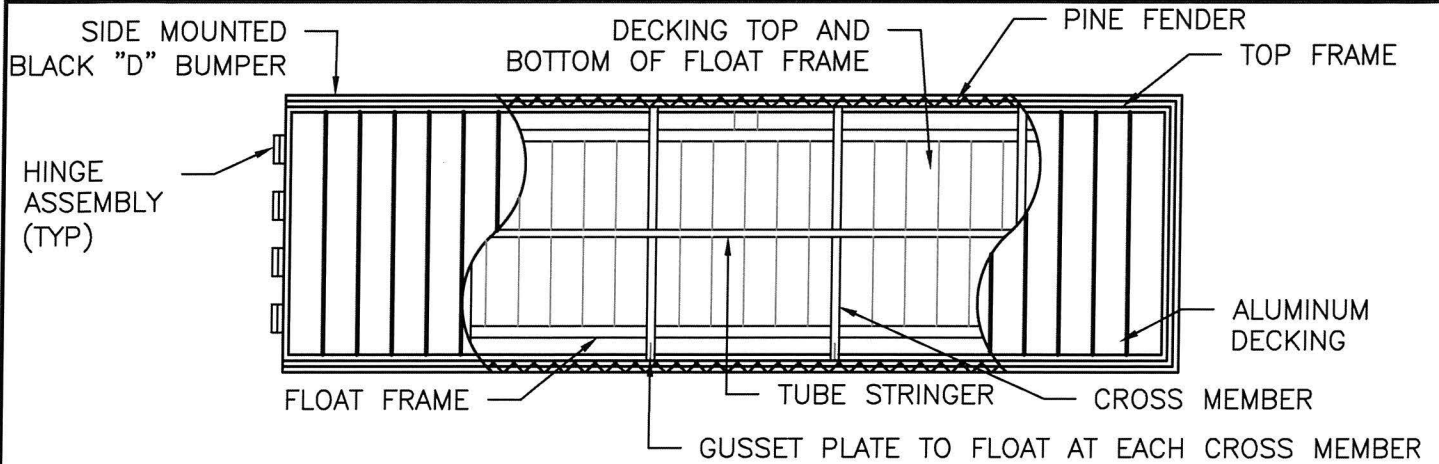


NOTE:
BASEMAP TAKEN FROM ANNE ARUNDEL COUNTY
2024 PLANIMETRICS AND 2020 IMAGERY.

BayLand
Consultants & Designers, Inc.
"Integrating Engineering and Environment"

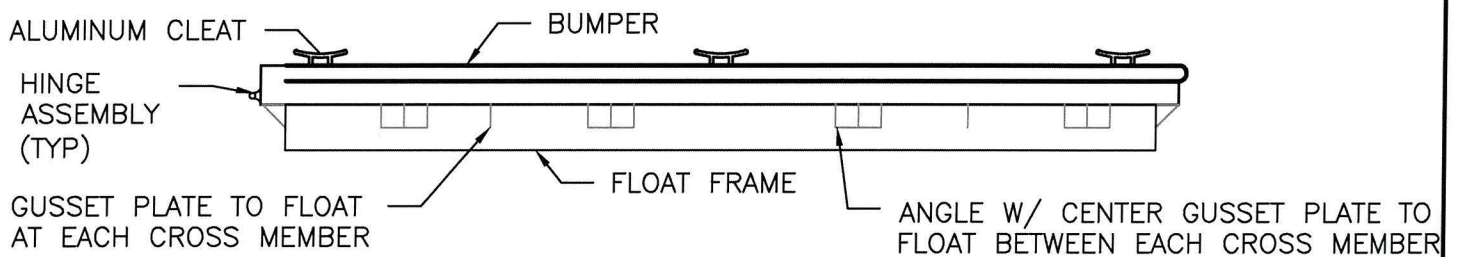
7455 New Ridge Road, Suite T Phone: (410) 694-9491
Hanover, Maryland 21076 Fax: (410) 694-9405
www.baylandinc.com

Z:\8-19704-THE POINT T-DOCK BULKHEAD IMPROVEMENTS\CAD FILES\SHEET FILES\WPA\8-19704-1P007.DWG



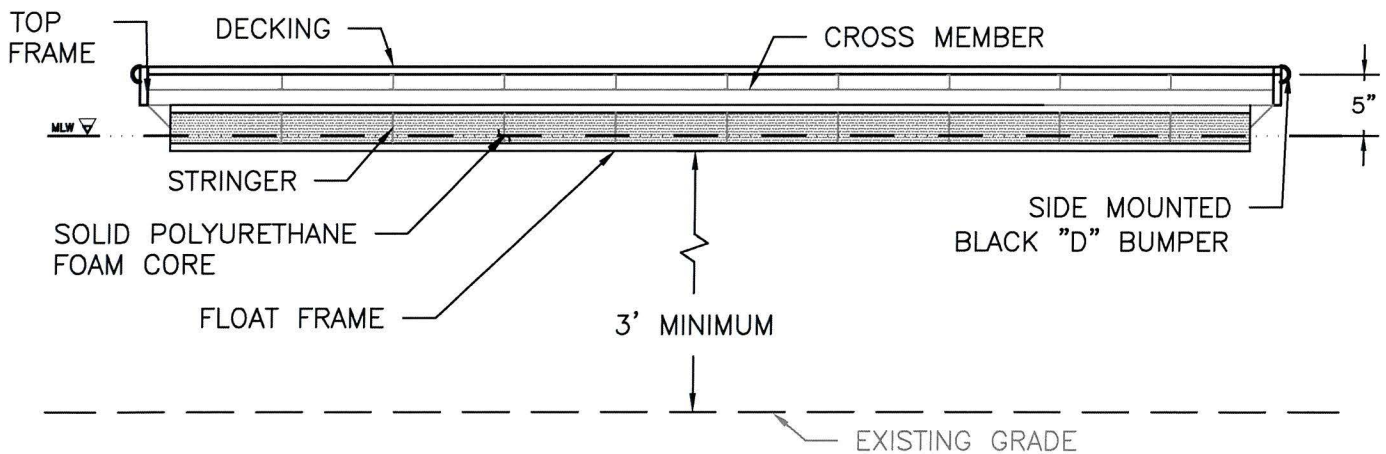
TYPICAL FLOATING PIER PLAN

SCALE: N.T.S.



TYPICAL FLOATING PIER PROFILE

SCALE: N.T.S.



TYPICAL FLOATING PIER PLAN

SCALE: N.T.S.

THE POINT CONDOMINIUM T-DOCK
& BULKHEAD IMPROVEMENTS
CITY OF ANNAPOLIS

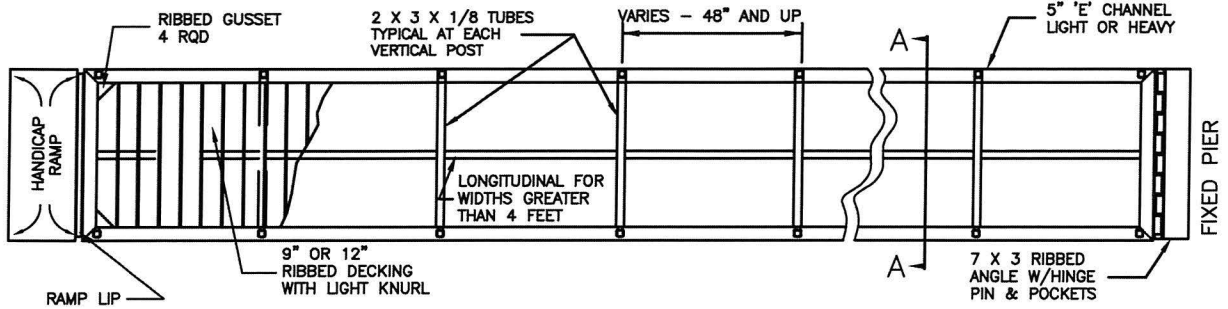
APPL. BY: THE POINT CONDOMINIUM COUNCIL OF UNIT OWNERS

DETAILS

DATE: OCTOBER 2024 SHEET 7 OF 12

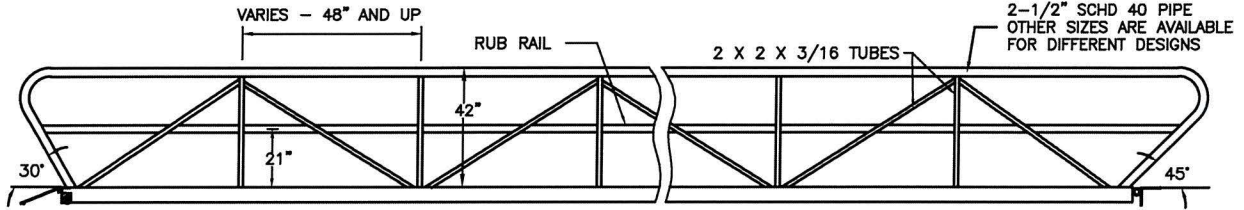
BayLand
Consultants & Designers, Inc.
"Integrating Engineering and Environment"
7455 New Ridge Road, Suite T Phone: (410) 694-9401
Hanover, Maryland 21076 Fax: (410) 694-9405
www.baylandinc.com

Z:\B_19704_THE_POINT_T-DOCK_BULKHEAD_PERMITTING\CAD FILES\SHEET FILES\A&L_19704_IPA08.DWG



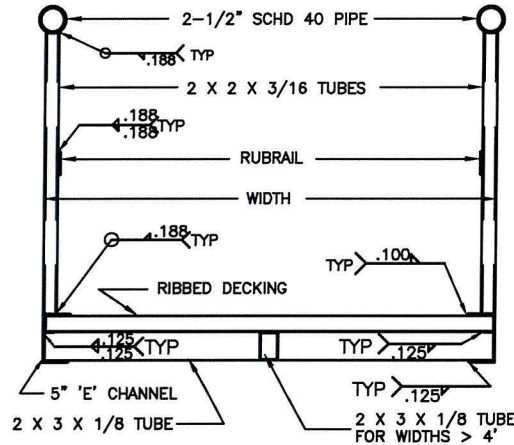
GANGWAY PLAN

SCALE: N.T.S.



GANGWAY PROFILE

SCALE: N.T.S.



GANGWAY SECTION A-A

SCALE: N.T.S.

THE POINT CONDOMINIUM T-DOCK
& BULKHEAD IMPROVEMENTS
CITY OF ANNAPOLIS

APPL. BY: THE POINT CONDOMINIUM COUNCIL OF UNIT OWNERS

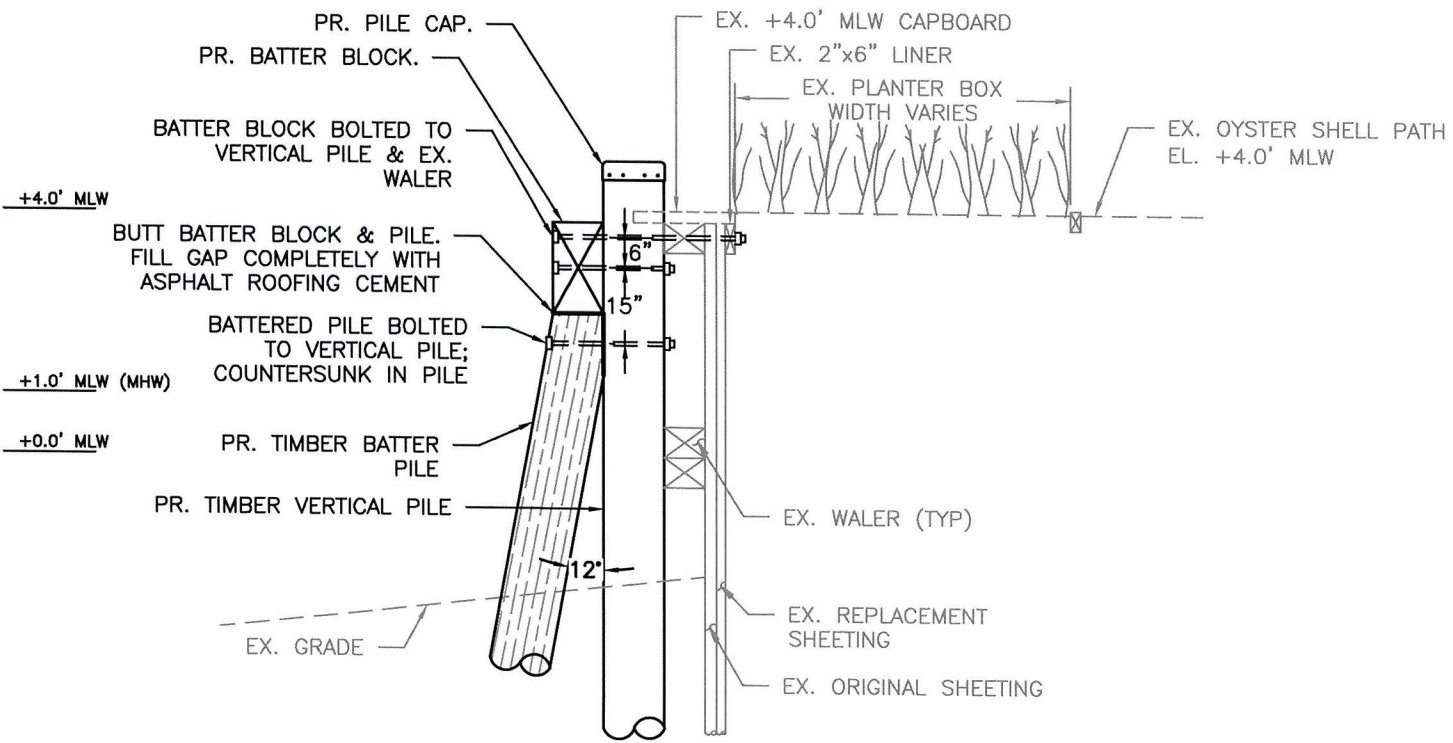
DETAILS

DATE: OCTOBER 2024 SHEET 8 OF 12

Bayland
Consultants & Designers, Inc.
"Integrating Engineering and Environment"

7455 New Ridge Road, Suite T Phone: (410) 694-9401
Hanover, Maryland 21076 Fax: (410) 694-9405
www.baylandinc.com

Z:\8_19704_THE_POINT_T-DOCK_BULKHEAD_PERMITTING\CAD FILES\SHEET FILES\JPA\8_19704_JPA06.DWG



VERTICAL AND BATTER PILE WALL: ZONE 5
SCALE: N.T.S.

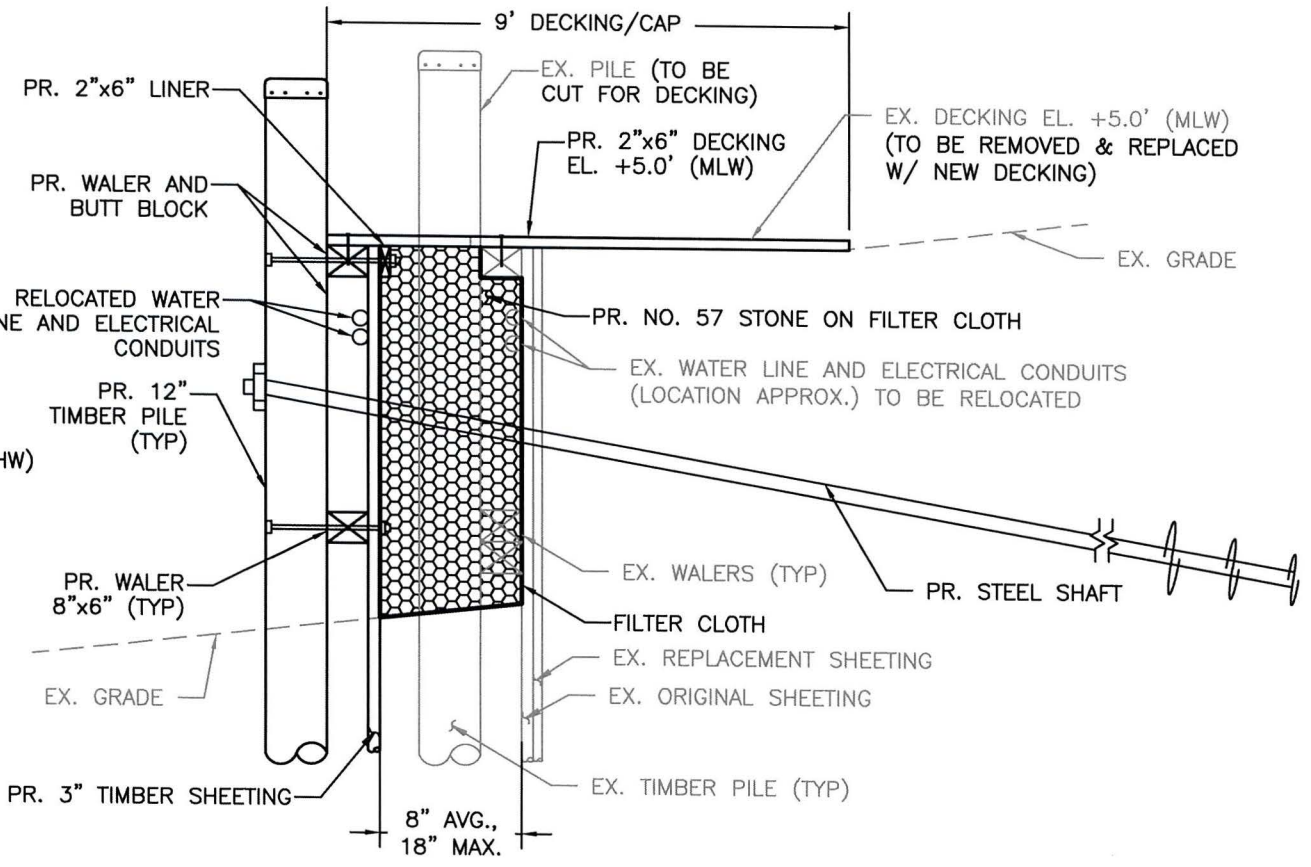
THE POINT CONDOMINIUM T-DOCK
& BULKHEAD IMPROVEMENTS
CITY OF ANNAPOLIS

APPL. BY: THE POINT CONDOMINIUM COUNCIL OF UNIT OWNERS
DETAILS

DATE: OCTOBER 2024 SHEET 9 OF 12

Bayland
Consultants & Designers, Inc.
"Integrating Engineering and Environment"

7455 New River Road, Suite T Phone: (410) 694-2011
Hannock, Maryland 21076 Fax: (410) 694-2005
www.baylandinc.com



HELICAL ANCHOR BULKHEAD: ZONE 3
SCALE: N.T.S.

**THE POINT CONDOMINIUM T-DOCK
& BULKHEAD IMPROVEMENTS
CITY OF ANNAPOLIS**

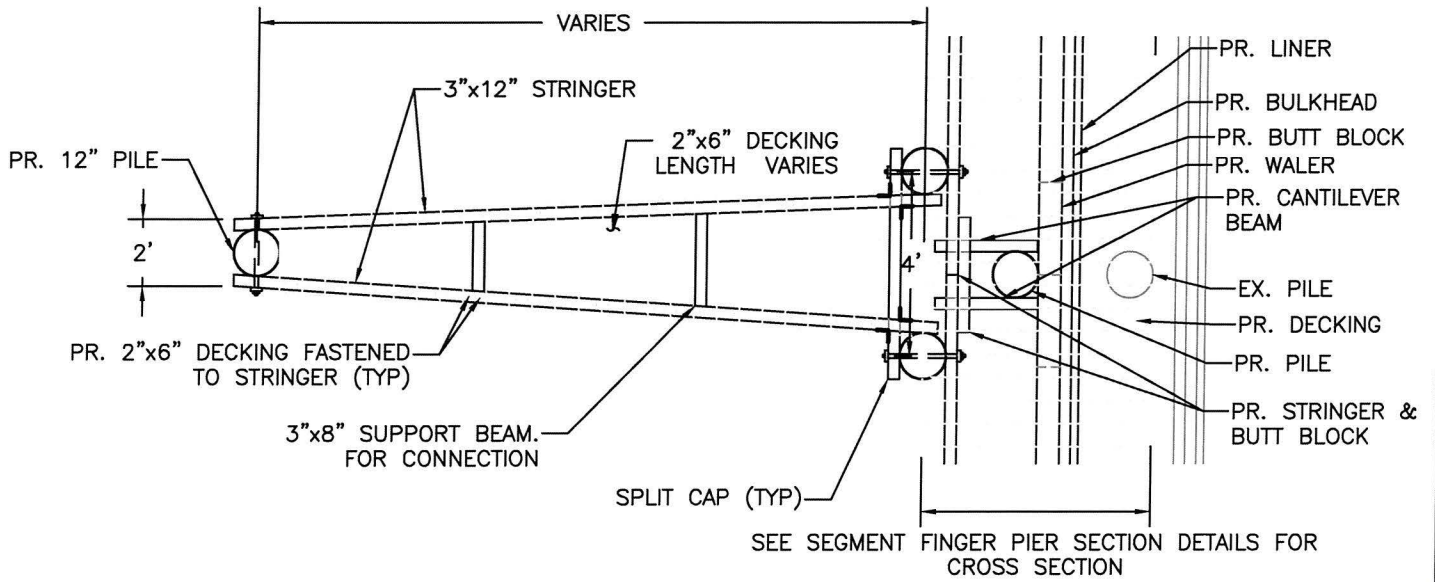
APPL. BY: THE POINT CONDOMINIUM COUNCIL OF UNIT OWNERS
DETAILS

DATE: OCTOBER 2024 SHEET 10 OF 12

Bayland
Consultants & Designers, Inc.
"Integrating Engineering and Environment"

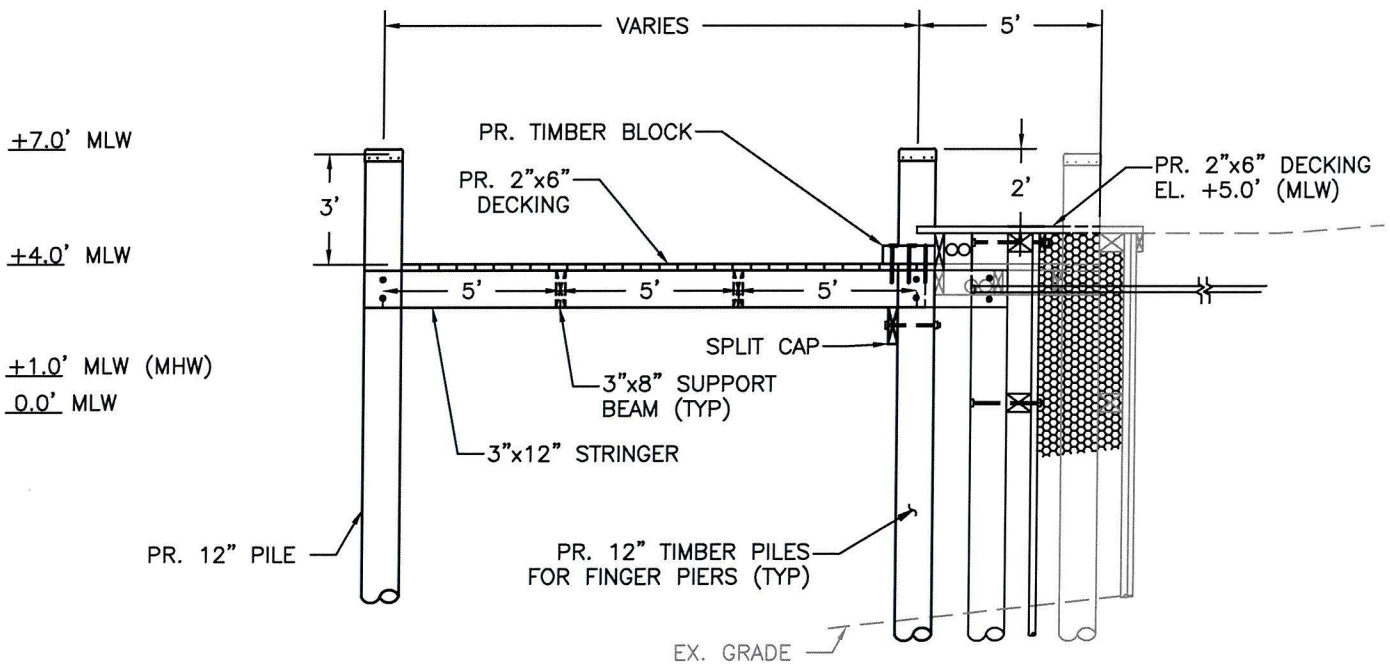
7455 New Ridge Road, Suite 1
Hanover, Maryland 21076
www.baylandinc.com

Phone: (410) 694-9801
Fax: (410) 694-9805



TYPICAL FINGER PIER TO MAIN BOARDWALK CONNECTION

SCALE: 1" = 4'



TYPICAL FINGER PIER SECTION

SCALE: 1" = 5'

THE POINT CONDOMINIUM T-DOCK
& BULKHEAD IMPROVEMENTS
CITY OF ANNAPOLIS

APPL. BY: THE POINT CONDOMINIUM COUNCIL OF UNIT OWNERS

DETAILS

DATE: OCTOBER 2024 SHEET 11 OF 12

Bayland
Consultants & Designers, Inc.
"Integrating Engineering and Environment"

7455 New Ridge Road, Suite T Phone: (410) 694-9401
Hanover, Maryland 21076 Fax: (410) 694-9405
www.baylandinc.com

Z:\8_19704_THE POINT T-DOCK BULKHEAD PERMITTING\CAD FILES\SHEET FILES\JPA\B_19704_JPA12.DWG

PROJECT SUMMARY

PROPOSED DEMOLITION OF STRUCTURES:

FLOATING PIERS - 60 SF TOTAL
LOADING PLATFORM: 20'X3' = 60 SF

FIXED PIERS - 2,542 TOTAL
T-DOCK - 1,788 SF
2 LANDING PLATFORMS: 38'X4' = 304 SF
MAIN PIER: 172'X6' = 1,032 SF
10 FINGER PIERS: 15'X3' = 450 SF
12" MOORING PILE - 29 TOTAL

ZONE 3 FINGERS - 756 SF
3 FINGER PIERS: 28'X3' = 252 SF
9 FINGER PIERS: 16'X3.5' = 504 SF
12" MOORING PILE - 40 TOTAL

TOTAL AREA OVER THE WATER TO BE REMOVED:

PILES - 69
TOTAL - 2,602 SF

TOTAL AREA OVER THE WATER TO BE CONSTRUCTED:

PILES - 85
TOTAL - 4,008 SF

TOTAL AREA OVER THE WATER TO BE NEWLY IMPACTED:

PILES - 16
TOTAL - 1,406 SF

PROPOSED CONSTRUCTION OF STRUCTURES:

FLOATING PIER - 2,560 SF TOTAL
T-DOCK - 2,560 SF
GANGWAY: 39'X6' = 234 SF
GANGWAY AREA NOT OVERLAPPING LANDING PLATFORM: 5'X6' = 30 SF
LANDING PLATFORM: 39'X14' = 546 SF
MAIN PIER: 149'X6' = 894 SF
1 FINGER PIER: 30'X5' = 150 SF
1 FINGER PIER: 35'X5' = 175 SF
5 FINGER PIERS: 30'X3' = 450 SF
3 FINGER PIERS: 35'X3' = 315 SF
12" MOORING PILE - 15 TOTAL

FIXED PIER - 903 SF TOTAL
LOADING PLATFORM - 273 TOTAL
REACH 1: 55'X3' = 165
REACH 2: 36'X3' = 108
12" MOORING PILE - 4

ZONE 3 FINGER PIERS - 630 SF
3 FINGER PIERS: 30'X3' = 270 SF
8 FINGER PIERS: 15'X3' = 360 SF
12" MOORING PILE - 38 TOTAL

ZONE 3 HELICAL ANCHOR BULKHEAD - 572 SF
TOTAL LENGTH - 381 FT
MAX. CHANNELWARD ENCROACHMENT - 1.5 FT

ZONE 5 REINFORCEMENT BATTER PILE WALL: PILES ONLY
VERTICAL AND BATTER PILES - 28 TOTAL

IMPACT SUMMARY

TOTAL AREA OF NEW IMPACT FROM MHW INTO TIDAL WATERS = 1,406 SF (0.03 AC)

NO SAV HAS BEEN PRESENT WITHIN THE PAST FIVE YEARS WITHIN THE PROJECT AREA.

NOTES

1. BASEMAP COMPILED FROM ANNE ARUNDEL COUNTY 2024 PLANIMETRICS AND 2020 IMAGERY.
2. SOUNDINGS AND CONTOURS ARE IN FEET AND REFER TO MLW.
3. TIDAL RANGE IS 1.0'
4. BATHYMETRIC & TOPOGRAPHIC SURVEY PERFORMED BY BAYLAND CONSULTANTS & DESIGNERS MAY 9, 2022.
5. THESE ARE PERMIT DRAWINGS ONLY AND SUBJECT TO CHANGE DURING THE PERMIT PROCESS. DESIGN DRAWINGS ARE TO BE PREPARED SEPARATELY.

THE POINT CONDOMINIUM T-DOCK & BULKHEAD IMPROVEMENTS CITY OF ANNAPOLIS

APPL. BY: THE POINT CONDOMINIUM COUNCIL OF UNIT OWNERS

SITE NOTES

DATE: OCTOBER 2024 SHEET 12 OF 12



Z:\0 - 19704 - THE POINT - T-DOCK - BULKHEAD - IMPROVEMENTS - PERMITTING\CAD FILES\SHEET FILES\WPA\B_L_19704_01PA13.DWG